

BWA's Service Summary

Basildon Women's Aid provides:

- Temporary housing for female victims and their children
- Support and Advocacy
- Legal & Housing advice
- Structured playwork & support for children living in the refuge
- Telephone helpline (open 9.30 am to 5.00 pm, weekdays)
01268 521666
- 24-hour emergency line 01268 581591
- Self help and Support groups
- One to one counselling from trained, volunteer counsellors
- Personal development training
- Domestic Violence Awareness training for external agencies
- Domestic Violence awareness training in schools
- Outreach services operating in Basildon, Brentwood, Castle Point and Rochford
- Stay Safe Floating Support Scheme

We offer a strictly confidential service

Office hours are 9.00 am to 5.00 pm

Monday to Friday

Stay-Safe Floating Support Scheme

The Stay-Safe Floating Support Scheme provides services to a changing group of women who have experienced domestic abuse and wish to remain in their home.

The scheme provides varying levels of support dependent on individual need. The support service enables families to maintain their tenancy during the period they are experiencing domestic abuse, or dealing with the problems caused by domestic abuse.

The scheme supports and empowers women to avoid repeat victimisation and is funded by Essex Supporting People.

If you want to refer someone to the scheme, or be referred yourself, or would like further information, please contact BWA Outreach Workers, Stay Safe Scheme, P O Box 51, Basildon, Essex.
01268 521666

Basildon Women's Aid

PO Box 51, Basildon, Essex. SS14 0ND

Phone: 01268 581591

Fax: 01268 581791

Parklands Centre: 01268 521666

Fax: 01268 521115

Email: refuge@basildonwa.org

Website: www.basildonwa.org

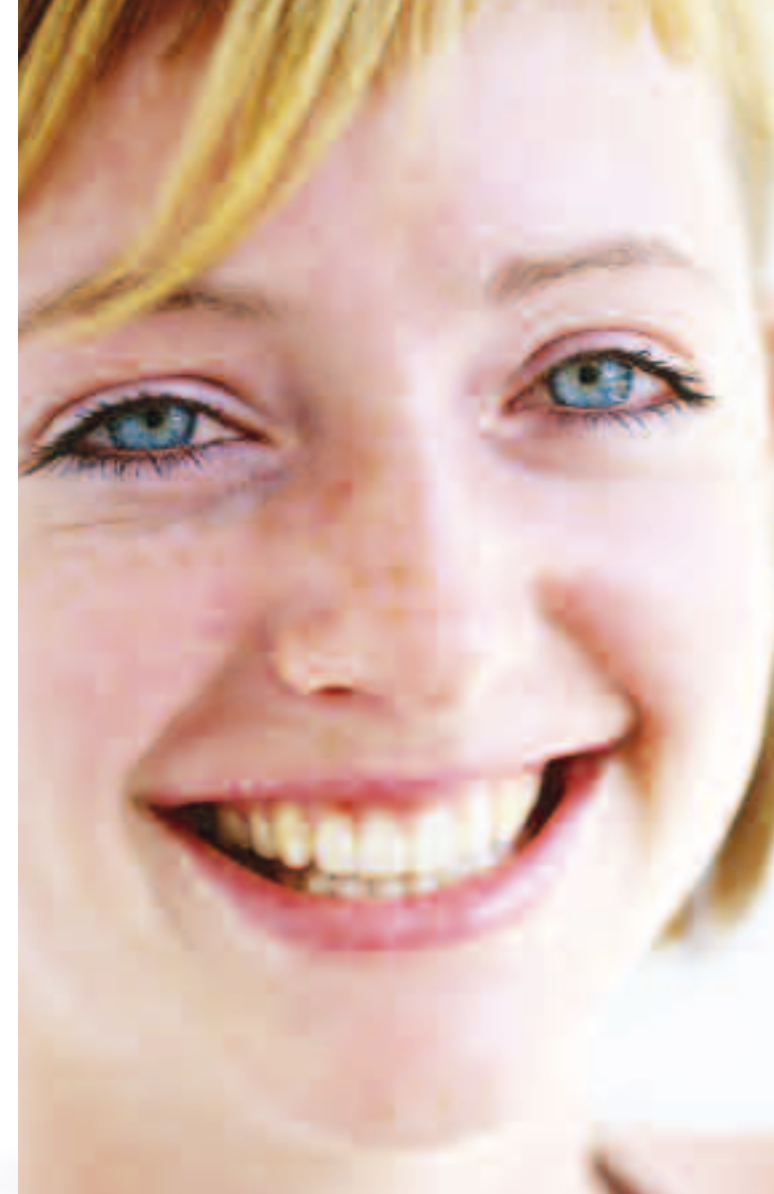


Voice

 **Basildon Women's Aid**

Charity No: 279777
Rev1 March 07

 **Basildon Women's Aid**



Basildon Women's Aid: About Us

Basildon Women's Aid is a charitable organisation providing a refuge for women and their children who have been victims of domestic violence, which may be physical, mental or sexual. The refuge offers an escape route from abuse and a chance to seek alternatives to a life of danger, isolation and fear.

What we can offer

We offer temporary accommodation to women of all ages, races and cultures, with or without children. Our trained staff provide support and advice on welfare, housing, schooling, legal and women's rights, and encourage women to regain a sense of worth.

The refuge is a communal home with shared facilities; residents give support to, and receive support from, each other. We also have self-contained units of move-on accommodation.

An outreach service for women living in the community was introduced in 1999. This consists of a support service at Castle Point, Brentwood, Rochford and a Women's Centre at Parklands Centre, Gloucester Park, Basildon, where the emphasis is on personal growth.



More about our services

The work in the refuge goes on ensuring that the families we accommodate receive the best possible service.



To help the children settle into refuge life, where practicable we offer all sorts of activities, ranging from a daily playgroup for the under 5's, an after school club for the older children and regular trips out, including: the cinema, bowling and local parks. In addition, and as part of a preventative programme to stop domestic abuse, BWA is leading the way with the development of its school's domestic violence awareness training programme.

Basildon Women's Aid provides protection and assistance to female victims of domestic abuse and works in partnership with various external agencies to provide quality services to all our clients.

Basildon Women's Aid:

Can we help you?

Ask yourself the following questions:

Has your current, or ex-partner been threatening, or bullying or violent towards you or your children? Has he/she ever:

- Expected/insisted on detailed reports of your movements?
- Insulted your family and friends, and tried to isolate you from them?
- Threatened to punish you?
- Ridiculed you and made you feel that no-one else would want you?
- Withheld money from you?

If you have answered 'yes' to any of the above questions, you may wish to contact us. For advice and information you can ring our Outreach Service on 01268 521666. Alternatively, if you need to leave your home urgently you can ring BWA direct on 01268 581591 (24 hour crisis line is in operation).

However, please dial 999 in an emergency!

Don't suffer in silence